

Deposit to earn rewards

Sign up and deposit to receive up to **10,055 USDT** in bonuses.
Exclusive for new users only.

Get it now

[PDF Database Document] - BTCC Cryptocurrency Exchange

Original:

<https://www.btcc.com/en-US/academy/research-analysis/shiba-inu-shib-price-prediction-will-shib-hit-1-as-shiba-inu-burn-rate-skyrockets-6200>

Shiba Inu (SHIB) Price Prediction: Will SHIB Hit \$1 As Shiba Inu Burn Rate Skyrockets 6200%?

Following Donald Trump's victory in US Election, the whole crypto market once again ignites huge excitement and bullish sentiment. Amid such a bull run development, meme coin sector also benefits a lot, with most meme coins witnessing massive price rally.

Shiba Inu (SHIB), an Ethereum-based meme coin featuring the Shiba Inu—a Japanese breed of hunting dog—as its mascot, sparks investor optimism globally due to its burn rate seeing a robust 6200% uptick. Amid such bullish sentiment, Shiba Inu (SHIB) price skyrocketed remarkably, causing several speculation about SHIB price hitting \$1.

In this article, we will introduce Shiba Inu (SHIB), analyzing whether Shiba Inu (SHIB) can hit \$1 based our price prediction on Shiba Inu (SHIB) from 2024 to 2050.



BTCC, one of the longest-running crypto exchanges in the world, supports trading for 300+ cryptocurrencies with leverage ranging from 1X to 500X. If you want to start trading cryptocurrencies, you can start by signing up for BTCC.

[\ Trade On BTCC With 10 FREE USDT! /](#)

[Register Now To Earn Rewards Up To 10,055 USDT](#)

Table of Contents

[What is Shiba Inu \(SHIB\)?](#)

[Shiba Inu Burn Rate Soars 6200% Sparking Bullish Market Sentiments](#)

[Shiba Inu \(SHIB\) Price Prediction](#)

[Will SHIB Hit \\$1?](#)


[How to Buy SHIB?](#)

[\ Trade On BTCC With 10 FREE USDT! /](#)


[Register Now To Earn Rewards Up To 10,055 USDT](#)

What is Shiba Inu (SHIB)?

ABOUT SHIB



SHIB (Shiba Inu)
Website: <https://shibatoken.com/>
ATH: \$0.000088190200
Rank: 12
24HP: \$0.000031489837 / 24LP: \$0.000028377040

	
Cryptocurrency	Shiba Inu
Token	SHIB
Price	\$ 0.000029820665 ▼ -3.06%
Rank	12

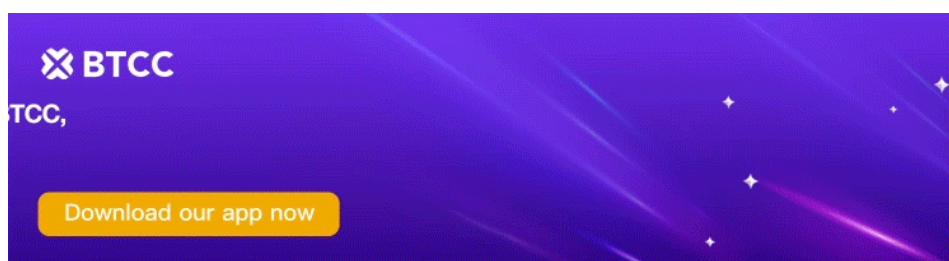
Market Cap	\$ 17.6B
24H Trading Volume	\$ 3.1B
All-time High	\$ 0.000088190200
All-time Low	\$ 0.000000000056
24 High	\$ 0.000031489837
24 Low	\$ 0.000028377040
Cycle High	\$ 0.000045007800 / 2024-03-05 02:10:00
Cycle Low	\$ 0.000005820900 / 2023-06-10 04:35:00
Update Time	2024-12-03 00:13:01

Created in August 2020 by an anonymous individual or group called Ryoshi, Shiba Inu is an Ethereum-based meme coin that features the Shiba Inu—a Japanese breed of hunting dog—as its mascot. Initially built on the Ethereum blockchain, it later shifted to the Shibarium layer-2 blockchain. While often compared to Dogecoin, SHIB began as a parody, addressing issues like trust and decentralization rather than having a specific use case.

Notably, Shiba Inu has attained several real-world applications, particularly in facilitating online purchases via platforms like Shopping.io. Its surge in popularity was catalyzed by its affordable price point, viral marketing strategies, and the growing trend of meme-inspired cryptocurrencies. Additionally, a robust community and a dynamic social media footprint contributed significantly to drawing in more investors.

SHIB USDT-margined perpetual futures contracts with a leverage of up to 50x are available on BTCC platform. If you are interested, click the button below to enter SHIB trading page ↓

[TRADE_PLUGIN]SHIBUSDT,SHIBUSDT[/TRADE_PLUGIN]

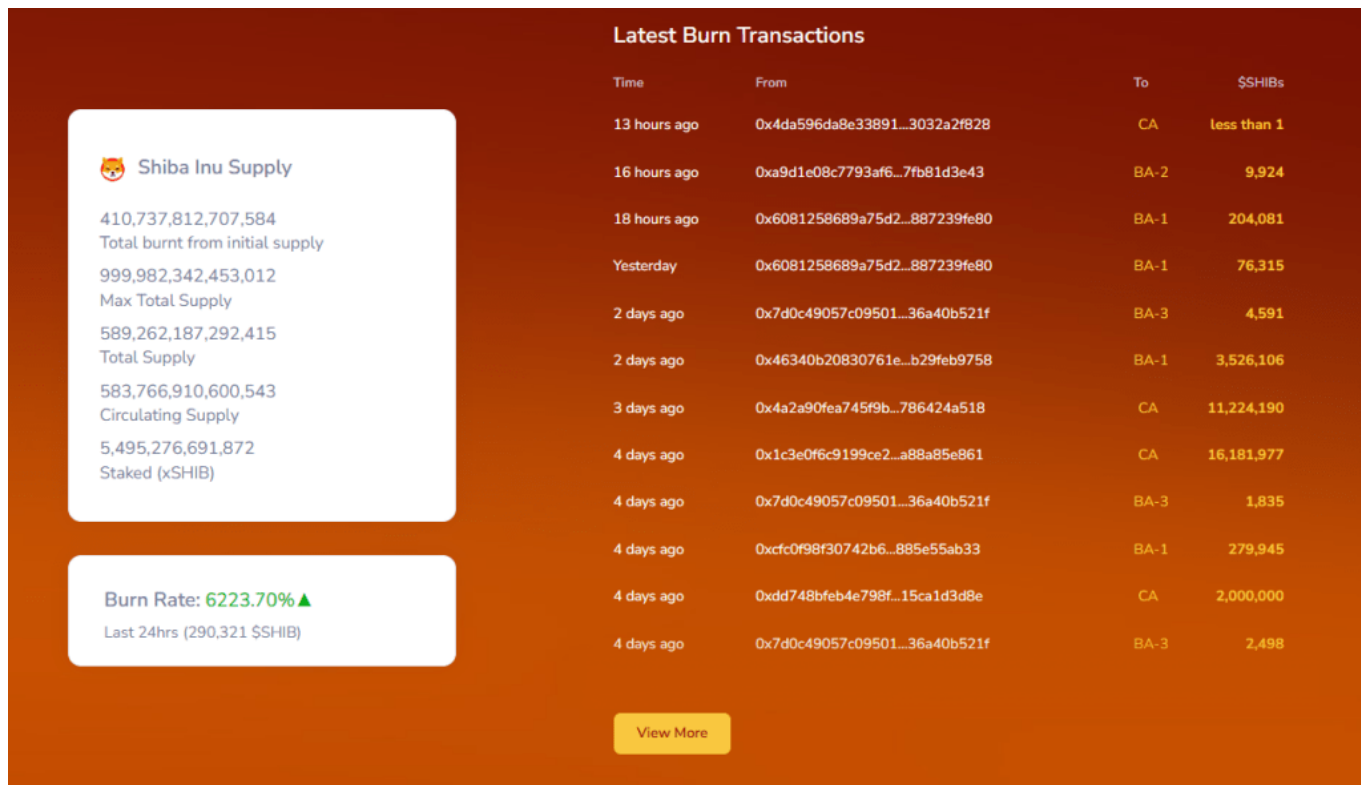


[Download App for Android](#)

[Download App for iOS](#)

Shiba Inu Burn Rate Soars 6200% Sparking Bullish Market Sentiments

As per the latest data released by the tracker Shibburn on November 18th, the Shiba Inu burn rate experienced a remarkable 6223% increase over the past 24 hours. Specifically, 290,321 coins were destroyed intrSHIBy. This substantial token burn contributed to the surge in popularity, attracting considerable attention to the cryptocurrency during a bull market, particularly as investors redirect their focus towards prominent meme coins.



Simultaneously, the total supply of Shiba Inu tokens was assessed at 589.26 trillion at the time of reporting, with the abovementioned burn surge further weighing in. Also, it's worth mentioning that the meme token witnessed 135 million SHIB taken out of its supply over the past week. Notably, over the past week, a total of 135 million SHIB tokens were removed from the supply. Overall, with the supply experiencing a significant reduction, market sentiment regarding this meme coin's price turned bullish, reflecting the fundamental economic principle of supply and demand.

[TRADE_PLUGIN]SHIBUSDT,SHIBUSDT[/TRADE_PLUGIN]

Shiba Inu (SHIB) Price Prediction

As of writing the article, SHIB is traded at \$ 0.000029820665, boasting a market cap of \$ 17.6B, and witnessing a hefty 24-hour trading volume of \$ 3.1B. SHIB Token saw a 24-hour price change of -3.06%, with minor fluctuations of 1.35% in the past hour.

The following sets forth the SHIB to USD Chart

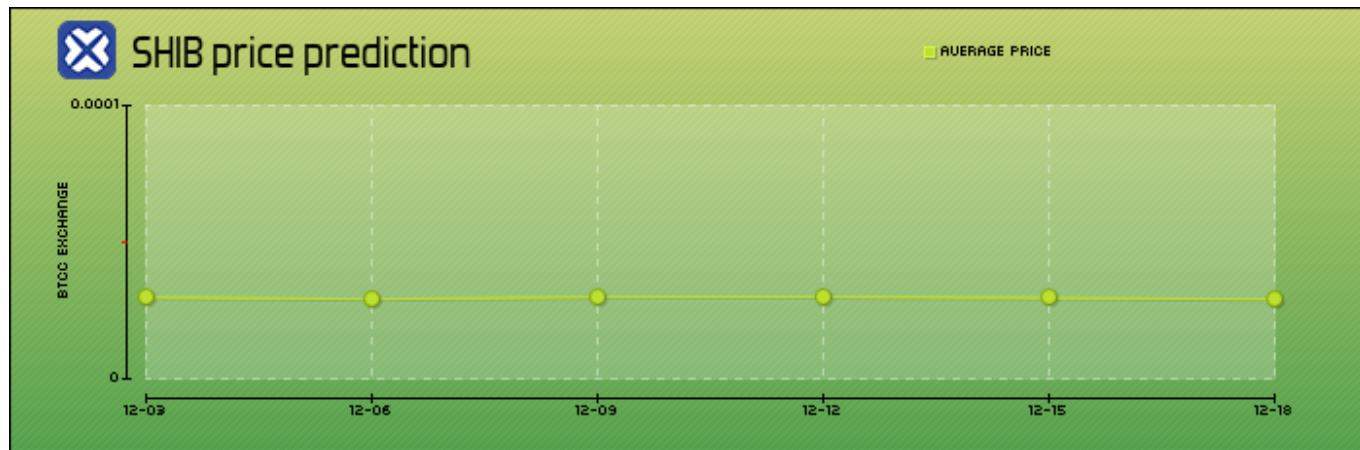
[Shiba Inu Price](#)

Price Change 1H Percent	1.35%
Price Change 1D Percent	-3.06%
Price Change 7D Percent	19.62%
Price Change 30D Percent	70.35%
Price Change 90D Percent	124.20%
Price Change 365D Percent	225.34%

Shiba Inu (SHIB) Price Prediction 2024

For Shiba Inu (SHIB) price prediction for 2024, based on current market conditions, Shiba Inu is predicted to be traded between \$0.000023 on the lower end and \$0.000034 on the high end, with an average trading price expecting to be around \$0.000029.

Here are the possible price changes we expect for Shiba Inu (SHIB) in the next half month:



Date	Price Prediction	Change
12-03	\$ 0.000029820665	0.00%
12-06	\$ 0.000029169510	-2.18%
12-09	\$ 0.000029932842	0.38%
12-12	\$ 0.000029968624	0.5%
12-15	\$ 0.000029607830	-0.71%
12-18	\$ 0.000029109874	-2.38%

Shiba Inu (SHIB) Price Prediction 2025

As to Shiba Inu (SHIB) Price Prediction for 2025, we anticipate SHIB's price rally to persist in 2025, fueled by the same array of factors that have propelled its growth trajectory in 2024. Furthermore, the token's price surge may intensify as Bitcoin reaches unprecedented heights, prompting an influx of investors, including those previously hesitant in the crypto sphere, to redirect their funds towards digital assets for the very first time.

Therefore, it is projected that Shiba Inu (SHIB) would reach a maximum price level of \$ 0.000498269042 in 2025. However, under a bearish circumstance, Shiba Inu (SHIB) is estimated to drop to a potential lowest price level of \$ 0.000209677825 during the year, with an average trading price of \$ 0.000358347389.

Shiba Inu (SHIB) Price Prediction 2030

In terms of long-term price prediction for 2030 on Shiba Inu (SHIB), our forecast remain bullish. We expect meme coin prices to keep rising from 2026-2030 in a virtuous cycle, with communities around tokens like \$SHIB holding onto tokens and driving up prices as demand exceeds supply

Considering this, our predict Shiba Inu to see an average price level of \$ 0.000426159767 in 2030. This still leaves \$SHIB among the top cryptocurrencies, ahead of \$BONK and \$BRETT. Overall, it is predicted that SHIB would see a potential low price of \$ 0.000355531185 and a maximum price level

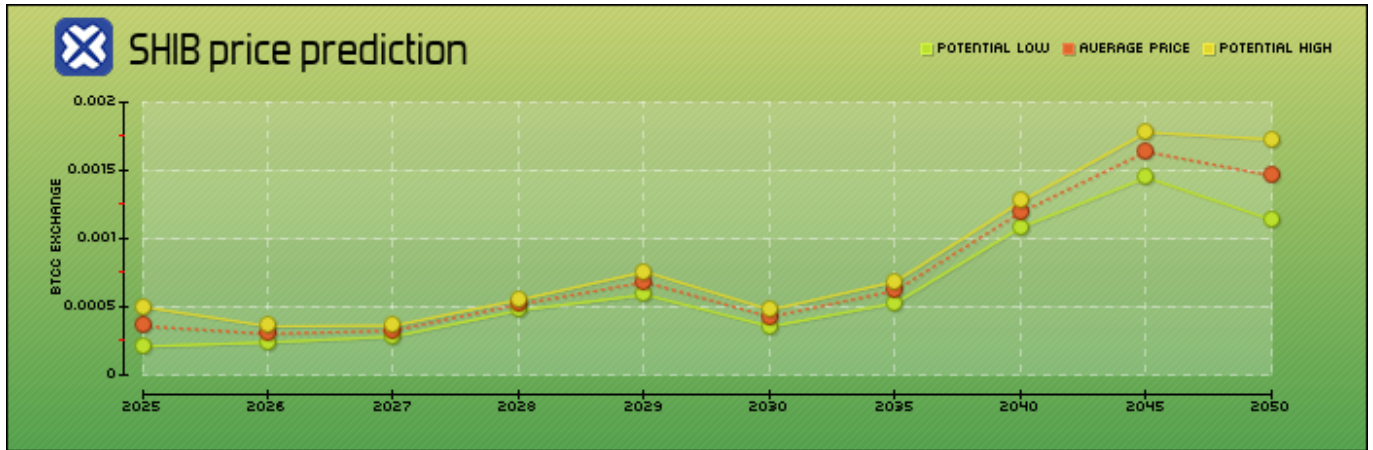
of \$ 0.000478043473.ion 2030

Shiba Inu (SHIB) Price Prediction 2050

As to Shiba Inu (SHIB)'s price prediction for 2050, Shiba Inu will likely experience strong volatility in the long run as it looks to establish itself as a permanent figure in the market. According to our current analysis, in 2050, SHIB coin is predicted to be traded between \$ 0.001137783375 to \$ 0.001727462661 and the average price of SHIB should be around \$ 0.001461055971.

Potential Highs & Lows of Shiba Inu (SHIB)

Here are our projected highs and lows for Shiba Inu (SHIB) from 2025 to 2050:



Year	Yearly Low	Yearly Average	Yearly High
2025	\$ 0.000209677825	\$ 0.000358347389	\$ 0.000498269042
2026	\$ 0.000238760794	\$ 0.000301306187	\$ 0.000357400823
2027	\$ 0.000281979782	\$ 0.000326149461	\$ 0.000362422822
2028	\$ 0.000474161340	\$ 0.000517658244	\$ 0.000551325449
2029	\$ 0.000588933858	\$ 0.000681077250	\$ 0.000756853575
2030	\$ 0.000355531185	\$ 0.000426159767	\$ 0.000478043473
2035	\$ 0.000527988359	\$ 0.000619499456	\$ 0.000685470793
2040	\$ 0.001083307648	\$ 0.001193045435	\$ 0.001272424935
2045	\$ 0.001448182448	\$ 0.001637317844	\$ 0.001779221784
2050	\$ 0.001137783375	\$ 0.001461055971	\$ 0.001727462661

\ Trade On BTCC With 10 FREE USDT! /

Register Now To Earn Rewards Up To 10,055 USDT

BTCC
 Level up your VIP status for more benefits
 BTCC - Your preferred crypto futures exchange
 Download our app now | Available on the App Store | GET IT ON Google Play | Support fiat and crypto deposits

[Download App for Android](#)

[Download App for iOS](#)

Will SHIB Hit \$1?

At press time, SHIB price noted gains worth 4% intraday and is now trading at \$ 0.000029820665. The meme coin's 24-hour low and high were \$ 0.000028377040 and \$ 0.000031489837, respectively. Notably, the rising movement falls in line with the abovementioned Shiba Inu burn rate surge.

Concurrently, Coinglass data revealed a 6% increase in SHIB futures open interest (OI) to \$93 million. This statistic underscores a heightened level of investor interest in the asset, indicating a potentially bullish trajectory for future movements.

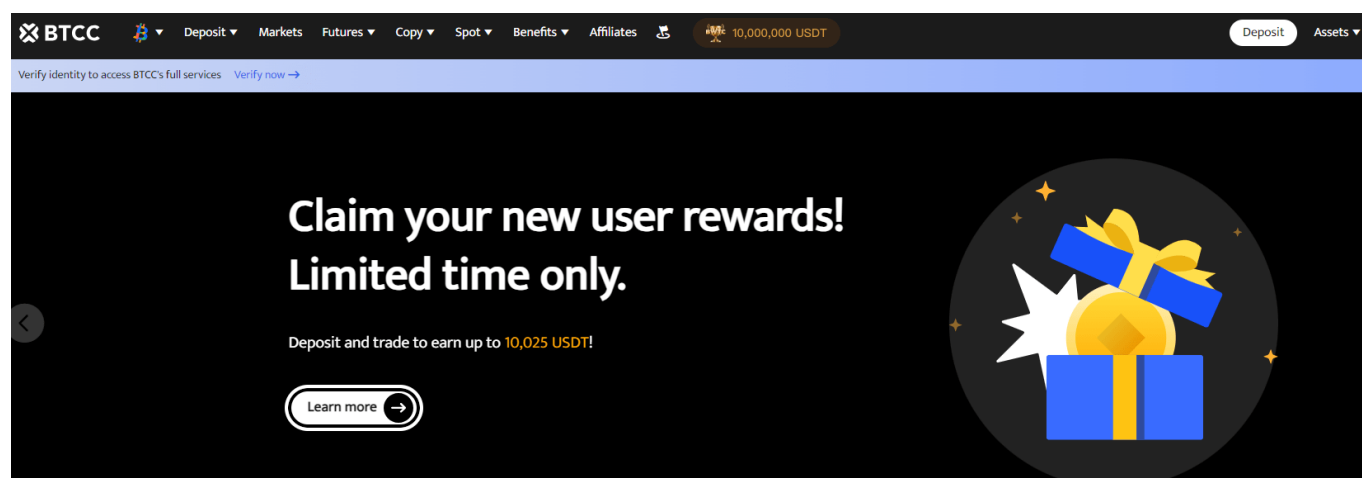
Furthermore, a recent price analysis of Shiba Inu by CoinGape Media suggested that the coin possesses the potential for further gains, albeit acknowledging that a \$1 price target remains ambitious. However, despite Shiba Inu boosts huge potential, its future development also depends on other factors like demand for the token, liquidity, its market cap, etc. As any investor carries both opportunities and risks, investors are advised to pay close attention to market dynamics and make cautious decisions.

[TRADE_PLUGIN]SHIBUSDT,SHIBUSDT[/TRADE_PLUGIN]

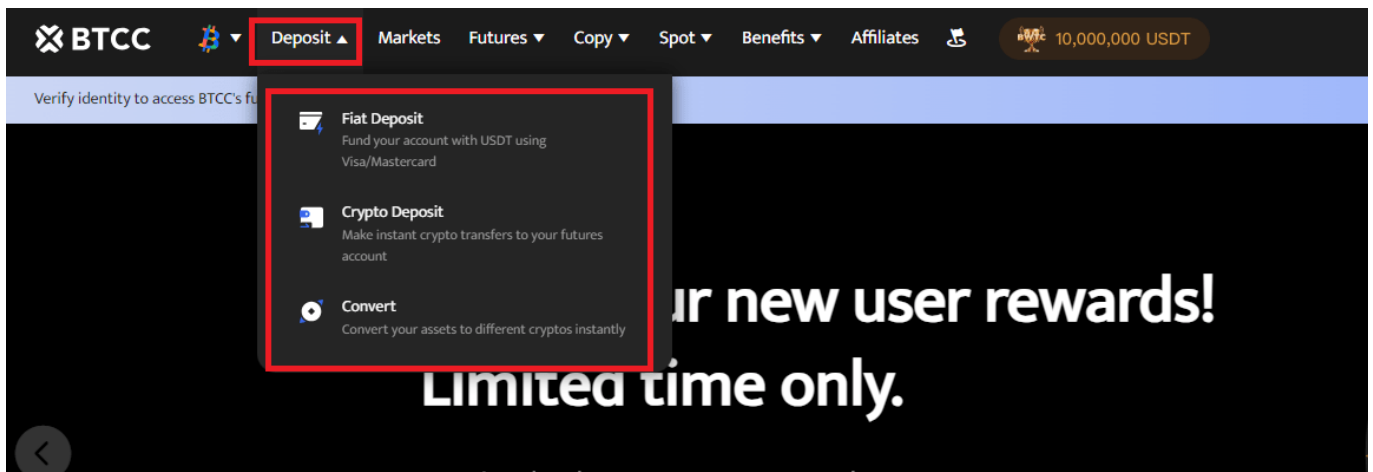
How to Buy SHIB?

Currently, SHIB USDT-margined perpetual futures contracts with a leverage of up to **50x** are now available on BTCC platform. The following sets forth the guidance for trading SHIB USDT-margined perpetual futures on cryptocurrency exchange BTCC:

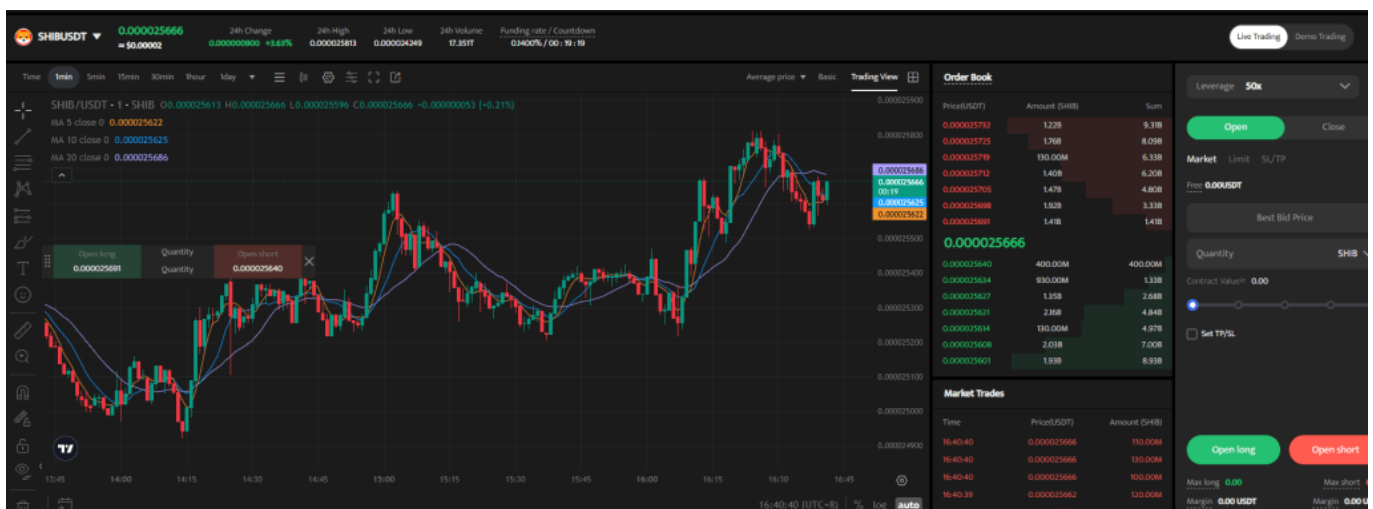
Step One: go to the [BTCC homepage](#) and log in to your BTCC account. If you do not have an account, you need to register first.



Step Two: on the BTCC official homepage, choose "Deposit", and then fund your account with your preferred method (Fiat Deposit, Crypto Deposit or Conversion).



Step Three: go back to the BTCC official homepage, choose “Futures” - “USDT-M Perpetual Futures Contract”, and find SHIB trading pair.



You can also click the button below to enter SHIB trading page ↓

[TRADE_PLUGIN]SHIBUSDT,SHIBUSDT[/TRADE_PLUGIN]

Step Four: choose the contract trading order type. Futures contract orders on BTCC include market orders, limit orders and SL/TP orders.

- **Market Order:** users place orders at the best price in the current market to achieve fast trading.
- **Limit Order:** Limit orders are a type of order to buy or sell futures at a price more favourable than the market price. When you buy at a price lower than the market price or sell at a price higher than the market price, the order will be in the form of a limit order.
- **SL/TP Order:** SL/TP orders are a type of order to buy or sell futures at a price less favourable than the market price. When you buy at a price higher than the market price or sell at a price lower than the market price, the order will be in the form of a SL/TP order.

Step Five: adjust the leverage multiple.

Please keep in mind that operating leverage carries the risk of liquidation. Leverage should be adjusted based on your financial status and risk tolerance.

Step Six: choose the lot size and set the SL/TP price .

Step Seven: after setting the basic data information, users can choose to buy (open long) or sell (open short) after entering their ideal price. Traders should remind that the price cannot be higher or lower than the highest buying price or lowest selling price of the platform.

Step Eight: click the buy or sell button, and SHIB futures contract order is completed.

That's all information about Shiba Inu (SHIB). If you want to know more information about Shiba Inu (SHIB) and other cryptocurrencies, please visit [BTCC Academy](#).

\ Trade On BTCC With 10 FREE USDT! /

[Register Now To Earn Rewards Up To 10,055 USDT](#)

You May Like:

[BTCC Exchange Review 2024](#)

[Cardano \(ADA\) Price Prediction: Will Cardano Hit ATH Soon?](#)

[Goatseus Maximus \(GOAT\) Price Prediction: Can GOAT Hit \\$5 After Breaking \\$1?](#)

[Popcat \(SOL\) Price Prediction: Can Popcat Hit A New ATH Following Trump's Victory In US Election?](#)

[Brett \(BRETT\) Price Prediction: Can BRETT Hit \\$1 Amid Current Bull Run?](#)

[What Is Cat in a Dogs World \(MEW\) Meme Coin: Next Big Meme Coin To Explode On Solana Blockchain?](#)

[What Is Omni Network \(OMNI\) Coin: Something You Need Know About It](#)

[KaiCat \(KAI\) Meme Coin Review: The Next 100X AI Crypto?](#)

[Brilliantcrypto's BRIL Token IEO Applications Begin On May 27: Brilliantcrypto \(BRIL\) Review & Analysis](#)

[Binance Unveils New Megadrop Project \\$LISTA: What is Lista\(LISTA\) Coin?](#)

[What is Oasys \(OAS\): Something You Need To Know About It](#)

[SEC Approves Spot Ethereum ETFs: When Will Ether ETFs Begin Trading?](#)

[Ethereum ETFs Review: Will Spot Ethereum ETF Get Approval This Year?](#)

[Best Cryptos to Buy Amid Higher Likelihood of Spot ETH ETF Approvals - Pepe, Arbitrum, Uniswap](#)

[How To Buy Ethereum \(ETH\) In Canada: A Updated Guidance For 2024](#)

[Is China's Gold Buying Frenzy a Catalyst for Bitcoin's Next Big Rally?](#)

[Oil Price Analysis & Forecast For 2024](#)

[New Meme Coin NotWifGary \(NWG\) Launched to Oppose SEC Crowdown: NotWifGary \(NWG\)](#)

[Review & Analysis](#)

[Top Metaverse Cryptocurrencies To Buy In 2024](#)